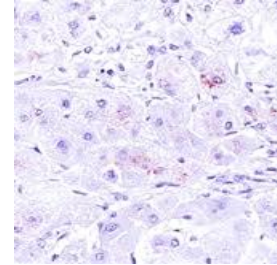


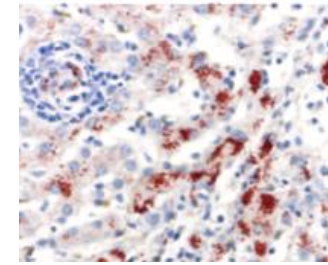
Copper Control Slides

Tissue:

- (+) Human liver tissue with copper deposit
- (-) Human normal liver tissue



(+)



(+++)

Rhodanine Stain

Copper	Red-brown cytoplasmic granules
--------	--------------------------------

Fixative: 10% Neutral buffered formalin

Embedding: Paraffin

Thickness: 4 μ m

Mounting: Mounted on positively charged slides made of pure white glass; air dried

STORAGE: 2-8°C.

INTENDED USE: Deparaffinize and rehydrate before use.

Positive tissue controls should only be utilized for monitoring the correct performance of processed tissues and test reagents, rather than as an aid in the interpretation of samples. If the positive tissue controls fail to demonstrate positive staining, results with the test specimens should be considered invalid.